



## INSTRUCTIONS FOR RADIUS BELL ENDS

75 Wales, Saint-André-d'Argenteuil, Québec, CANADA J0V 1X0 | +1 450 537-3311 | Fax: +1 450 537-3415  
60 Greenhorn Drive, Pueblo, Colorado, 81004, USA | +1 719 565-3311 | Fax: +1 719 564-3415  
Toll free: +1 888 849-9909 | [frecomposites.com](http://frecomposites.com)

### RADIUS BELL ENDS

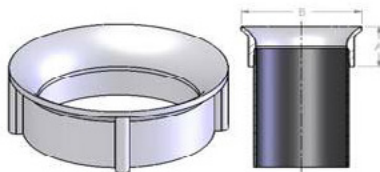
FRE Composites' has designed the Radius Bell End which has a smooth bevelled radius for FRE<sup>®</sup> Conduit terminations to minimize cable jacket damage at manholes or vaults.

The bevelled radius feature provides a smooth surface (rather than rough, cut edges) over which the cable passes when it is pulled into the conduit. The bevelled radius also minimizes elongation of the cable caused by frictional drag between cable and conduit interface.

The Radius Bell End has an excellent frictional fit to FRE<sup>®</sup> Conduit which ensures a tight seal between the conduit, Radius Bell End and the vault wall.

In addition, when encased in concrete, the Radius Bell End's special reinforcing ribs provide excellent adhesion for a completely finished, permanent termination.

The Radius Bell Ends, in IPS sizes from 3/4" (21 mm) to 8" (203 mm) and in ID sizes from 2" (53 mm) to 6" (155 mm) are made of a fiberglass resin compound, compression moulded to tight tolerances, and has a service temperature range of -65 °F to 266 °F (-54 °C to 130 °C). Over these temperature extremes and variations, the Radius Bell End has excellent impact and compressive strength consistent with conduit mechanical properties. In addition, the Radius Bell End is virtually impervious to rot, corrosion and chemicals and is especially suitable for areas of high alkaline contents.



RADIUS BELL END



Assembly of the Radius Bell End to FRE<sup>®</sup> Conduit is easy. Simply push-fit the Radius Bell End over the conduit male end.

This document is the property of FRE Composites (2005) Inc. ("FRE Composites"). It shall not be used, reproduced, copied or transmitted to other persons without written authorization.